

# SimPRO Integration Analysis

Uncover integration inefficiencies and build a roadmap for scalable, connected operations.

*"Adaptiv's culture of engagement and professionalism, their deep knowledge, and willingness to offer advice and beyond, have been a hallmark of our relationship over the years. The trust and respect we have for Adaptiv is built on their legacy of outstanding delivery for PlaceMakers." - Mark Phillips, GM of Technology for the Distribution and Concrete Divisions, Fletcher Building Group*

## What is this offer about?

Adaptiv's SimPRO Integration Environment Analysis is the essential first step in understanding and optimising your current simPRO setup. We assess how simPRO connects with your broader ecosystem; ERP, CRM, field apps, finance systems, ensuring it's working efficiently for your business across New Zealand and Australia.

Through focused workshops and technical analysis, we uncover how your simPRO data flows, where friction exists, and where opportunities lie to reduce duplication, reliance on niche skills, and operational delays. Our experienced integration consultants work with your team to benchmark current capability, uncover risks, and map out smarter paths forward.

As experts in simPRO integration, we help you move with clarity and confidence, building a stronger foundation for automation, scalability, and future success.

## Ideal customer profile

### Challenge 1: Disconnected Systems & Double Handling

- ▶ Businesses using simPRO often rely on manual processes to transfer data between simPRO, finance systems (like Xero or MYOB), CRMs, and job management tools. This creates inefficiencies, data duplication, and errors that slow down invoicing, scheduling, and reporting.

### Challenge 2: Field & Office Workflow Friction

- ▶ Companies with field teams and office staff often face challenges syncing job updates, customer data, or timesheets between simPRO and other systems. These breakdowns affect service delivery, customer satisfaction, and job profitability.

### Challenge 3: Limited Visibility Across the Business

- ▶ When simPRO isn't integrated into a wider data strategy, business leaders lack real-time insight into operations, financial performance, and

workforce productivity, making it harder to make informed decisions or scale confidently.

### Challenge 4: Reliance on Workarounds or Internal Champions

- ▶ Many organisations depend on a few individuals who understand how everything fits together. This creates bottlenecks, increases risk, and limits the ability to grow or adapt when staff change or new tools are introduced.

## AT A GLANCE

COST EST: \$20,000 base price

### DELIVERABLES:

- ▶ Integration Landscape Report: Overview of current state.
- ▶ Future Requirements Analysis: Upcoming needs outlined.
- ▶ Integration Strategy Roadmap: Guide to cost-saving and optimisation.

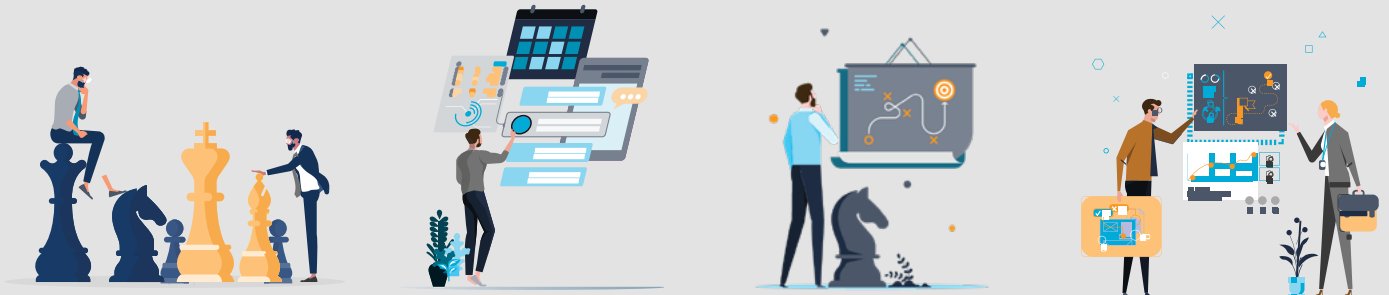
### BENEFITS:

- ▶ Strategic Clarity: Clear roadmap for integration.
- ▶ Cost Efficiency: Pinpoints cost-saving opportunities.
- ▶ Skill Optimisation: Reduces reliance on limited expertise.
- ▶ Streamlined Operations: Simplifies integration post-acquisitions.
- ▶ Future-Proofing: Transitions to sustainable strategies.
- ▶ Risk Mitigation: Identifies and addresses vulnerabilities.

TIME TO VALUE: Est. 2 weeks

## Adaptiv's Engagement Model

Navigating the complexities of integration demands a strategic approach. At Adaptiv, we tackle these with strategic, platform-agnostic methodologies ensuring a custom-fit solution for your business's unique challenges.



01

REVIEW



**Review:** workshops with business and technical stakeholders to understand your current integration landscape, technologies in place, and any existing landing zones.

02

DEFINE



**Define:** Collaborate with Senior Architects to identify future requirements, understand your strategy, and outline the necessary people, processes, tools, and technologies.

03

PLAN



**Plan:** Develop a comprehensive roadmap for success, highlighting areas for potential risks, and vulnerabilities.

04

PRESENT



**Present:** Present strategy to stakeholders, ensuring clarity, alignment, and a shared vision for the future of your integration journey

## Take the Next Step

With over a decade of experience in delivering small-scale and large-scale integration for the enterprise, we deliver clear and measurable value to your bottom line.

### 24/7 SUPPORT

support@adaptiv.nz  
+64 (0)9 280 6675

### SALES / GENERAL

Christian.Kelbrick@adaptiv.nz  
(+64) 27 800 6806

### CAREERS

adaptiv.nz/our-people/  
join-us

### SOCIAL

@adaptivnz